



Pune District Education Association's  
**Annasaheb Magar Mahavidyalaya**  
**Hadapsar, Pune- 411028**  
Affiliated to Savitribai Phule Pune University, Pune



## Metric 7.1.2 (QnM) Geo-tagged photographs of the facilities Index

Sr. No.	Particular	Page No.
<b>a</b>	<b>Solid (Biodegradable) Waste Management</b>	
i	Solid wet waste and dry waste sorting bins	5-6
ii	Separated bins for paper, Plastic, waste collection	7-8
iii	Preparation of Vermi-compost in college campus	9-11
iv	Use of Vermi compost to garden plants	12-12
<b>b</b>	<b>Liquid waste management</b>	
i	Installation of Effluent Treatment Plant	13-13
<b>c</b>	<b>Plastic waste management</b>	
i	Plastic awareness banners are placed in the campus.	14-15
ii	Separate plastic bins are placed in the campus.	16-16



Pune District Education Association's  
**Annasaheb Magar Mahavidyalaya**  
**Hadapsar, Pune- 411028**  
Affiliated to Savitribai Phule Pune University, Pune



### Self Study Report: 2024 (4<sup>th</sup> Cycle)

## Metric 7.1.2 (QnM) Geo-tagged photographs of the facilities Index

Sr. No.	Particular	Page No.
<b>d</b>	<b>E- waste Management</b>	
i	E-Waste bins are placed in college campus	17-17
ii	E- Waste collected from staff and students	18-19
<b>e</b>	<b>Biomedical waste management</b>	
i	Installation of sanitary napkin wending machine in college	21-22
ii	Installation of sanitary napkin destroyer machine in college	23-24
iii	Installation of sanitary napkin wending machine in college ladies hostel	25-25
iv	Use of autoclave for decontaminating the microbial waste	26-28

## Solid waste management

Sr. No.	Particulars
1.	Solid wet waste and dry waste sorting bins
2.	Separated bins for paper, Plastic, waste collection
3.	Preparation of Vermi-compost in college campus
4.	Use of Vermi compost to garden plants
5.	Available Excess Vermi- compost made to stakeholders



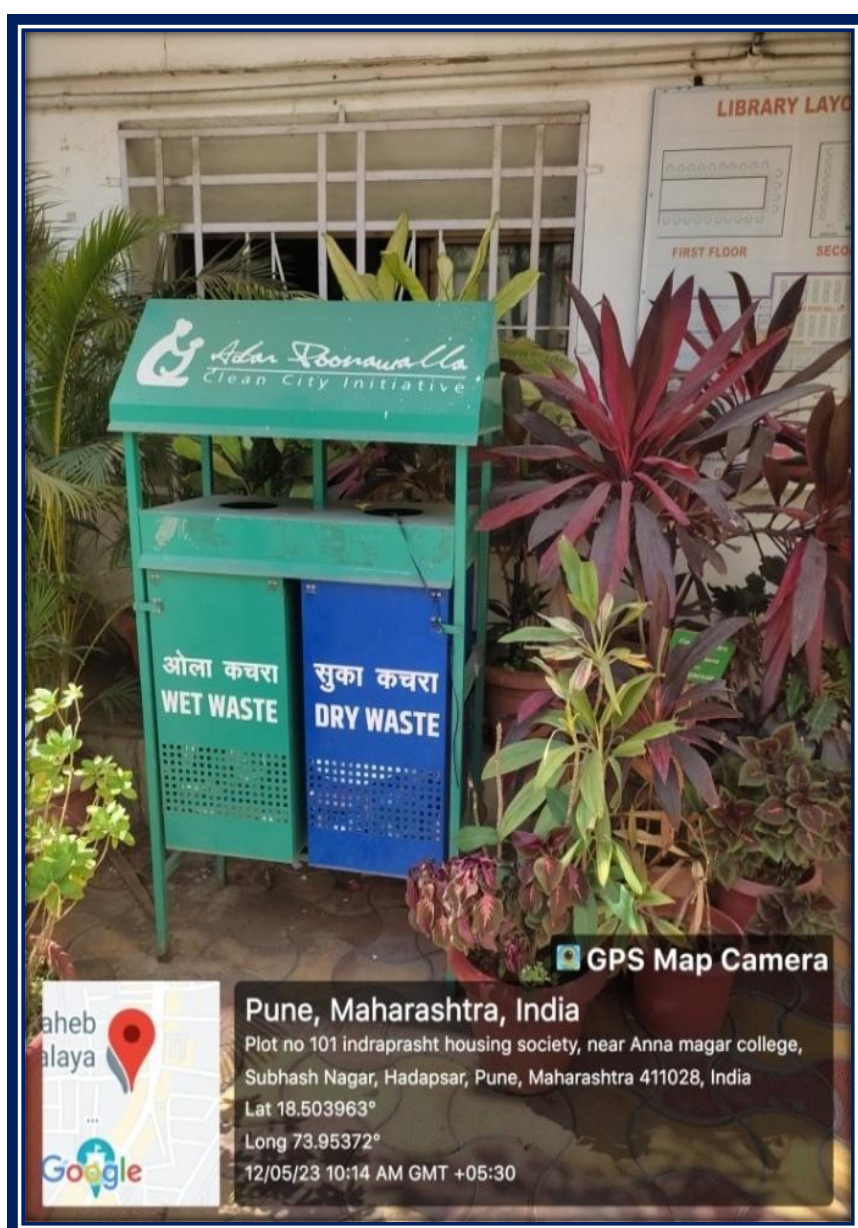
**Pune District Education Association's  
Annasaheb Magar Mahavidyalaya  
Hadapsar, Pune- 411028**

Affiliated to Savitribai Phule Pune University, Pune



**Self Study Report: 2024 (4<sup>th</sup> Cycle)**

## Solid wet waste and dry waste sorting bins





Pune District Education Association's  
**Annasaheb Magar Mahavidyalaya**  
Hadapsar, Pune- 411028  
Affiliated to Savitribai Phule Pune University, Pune



**Self Study Report: 2024 (4<sup>th</sup> Cycle)**

## Solid wet waste and dry waste sorting bins







Pune District Education Association's  
**Annasaheb Magar Mahavidyalaya**  
**Hadapsar, Pune- 411028**  
Affiliated to Savitribai Phule Pune University, Pune



**Self Study Report: 2024 (4<sup>th</sup> Cycle)**

## Separated bins for paper, Plastic waste collection Plastic Dustbin





Pune District Education Association's  
**Annasaheb Magar Mahavidyalaya**  
**Hadapsar, Pune- 411028**  
Affiliated to Savitribai Phule Pune University, Pune



**Self Study Report: 2024 (4<sup>th</sup> Cycle)**

## Separated bins for paper, Plastic waste collection Paper Dustbin





Pune District Education Association's  
**Annasaheb Magar Mahavidyalaya**  
**Hadapsar, Pune- 411028**  
Affiliated to Savitribai Phule Pune University, Pune



**Self Study Report: 2024 (4<sup>th</sup> Cycle)**

## Preparation of Vermi-compost in college campus





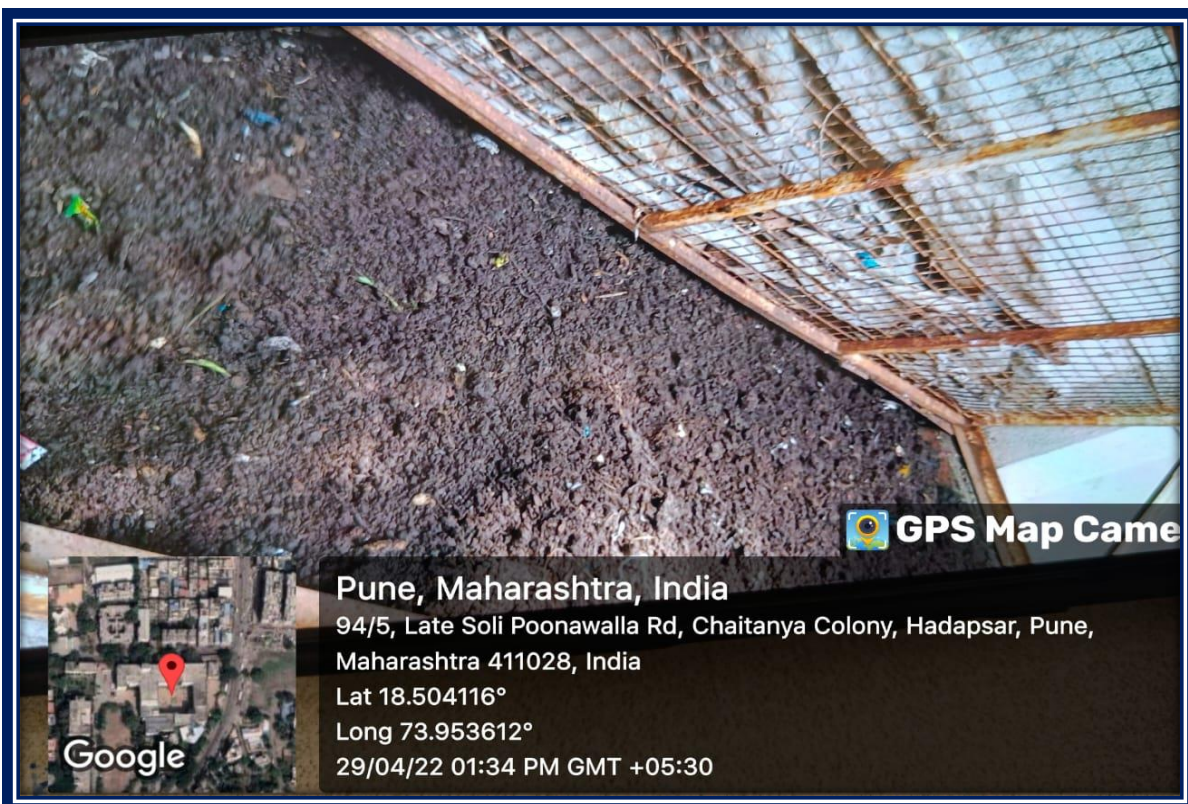


Pune District Education Association's  
**Annasaheb Magar Mahavidyalaya**  
**Hadapsar, Pune- 411028**  
Affiliated to Savitribai Phule Pune University, Pune



**Self Study Report: 2024 (4<sup>th</sup> Cycle)**

## Preparation of Vermi-compost in college campus





Pune District Education Association's  
**Annasaheb Magar Mahavidyalaya**  
**Hadapsar, Pune- 411028**  
Affiliated to Savitribai Phule Pune University, Pune



**Self Study Report: 2024 (4<sup>th</sup> Cycle)**

## Preparation of Vermi-compost in college campus







**Pune District Education Association's**  
**Annasaheb Magar Mahavidyalaya**  
**Hadapsar, Pune- 411028**  
Affiliated to Savitribai Phule Pune University, Pune



## Self Study Report: 2024 (4<sup>th</sup> Cycle)

### Use of Vermi compost to garden plants





Pune District Education Association's  
**Annasaheb Magar Mahavidyalaya**  
**Hadapsar, Pune- 411028**  
Affiliated to Savitribai Phule Pune University, Pune



**Self Study Report: 2024 (4<sup>th</sup> Cycle)**

## Effluent treatment plant (ETP)



Pune, Maharashtra, India  
94/5, Late Soli Poonawalla Rd, Chaitanya Colony, Hadapsar, Pune,  
Maharashtra 411028, India  
Lat 18.504112°  
Long 73.953609°  
16/02/22 01:15 PM GMT +05:30

GPS Map Camera





**Pune District Education Association's**  
**Annasaheb Magar Mahavidyalaya**  
**Hadapsar, Pune- 411028**  
Affiliated to Savitribai Phule Pune University, Pune



**Self Study Report: 2024 (4<sup>th</sup> Cycle)**

## Plastic Waste Management

Sr. No.	Particulars
1.	Plastic waste awareness banners are placed in the campus.
2.	Separate plastic bins are placed in the campus.



Pune District Education Association's  
**Annasaheb Magar Mahavidyalaya**  
**Hadapsar, Pune- 411028**  
Affiliated to Savitribai Phule Pune University, Pune



**Self Study Report: 2024 (4<sup>th</sup> Cycle)**

**Plastic waste awareness banners are placed in  
the campus**





**Pune District Education Association's**  
**Annasaheb Magar Mahavidyalaya**  
**Hadapsar, Pune- 411028**  
Affiliated to Savitribai Phule Pune University, Pune



### Self Study Report: 2024 (4<sup>th</sup> Cycle)

**Separate plastic bins are placed in the campus.**







Pune District Education Association's  
**Annasaheb Magar Mahavidyalaya**  
Hadapsar, Pune- 411028  
Affiliated to Savitribai Phule Pune University, Pune



## Self Study Report: 2024 (4<sup>th</sup> Cycle)

### E- Waste Management

**E-Waste Collection Center**  
Get rid of E-waste !  
Donate Here !  
FREE COLLECTION  
Contact Us for Large Size E-Waste Donation  
9146010629/8380043277

**REUSE REPAIR RECYCLE**  
MOBILE PHONES  
HEADSET PHONES  
COMPUTERS  
KEYBOARDS  
CAMERAS  
CHARGERS  
WIRELESS PHONES  
MICROWAVE OVEN  
HEATING APPLIANCES

**EFFECTS OF E-WASTE**  
**HEALTH:**  
Lung Cancer  
Damage to Liver, Spleen  
Autoimmune Problems  
**ENVIRONMENT:**  
Pollution of Ground Water  
Acidification of Soil  
Air Pollution

**GPS Map C**  
Pune, Maharashtra, India  
94/5, Late Soli Poonawalla Rd, Chaitanya Colony, Hadapsar  
Pune, Maharashtra 411028, India  
Lat 18.504116°  
Long 73.953612°  
21/03/22 11:26 AM GMT +05:30





Pune District Education Association's  
**Annasaheb Magar Mahavidyalaya**  
**Hadapsar, Pune- 411028**  
Affiliated to Savitribai Phule Pune University, Pune



## Self Study Report: 2024 (4<sup>th</sup> Cycle)

### E- Waste collected from staff and students



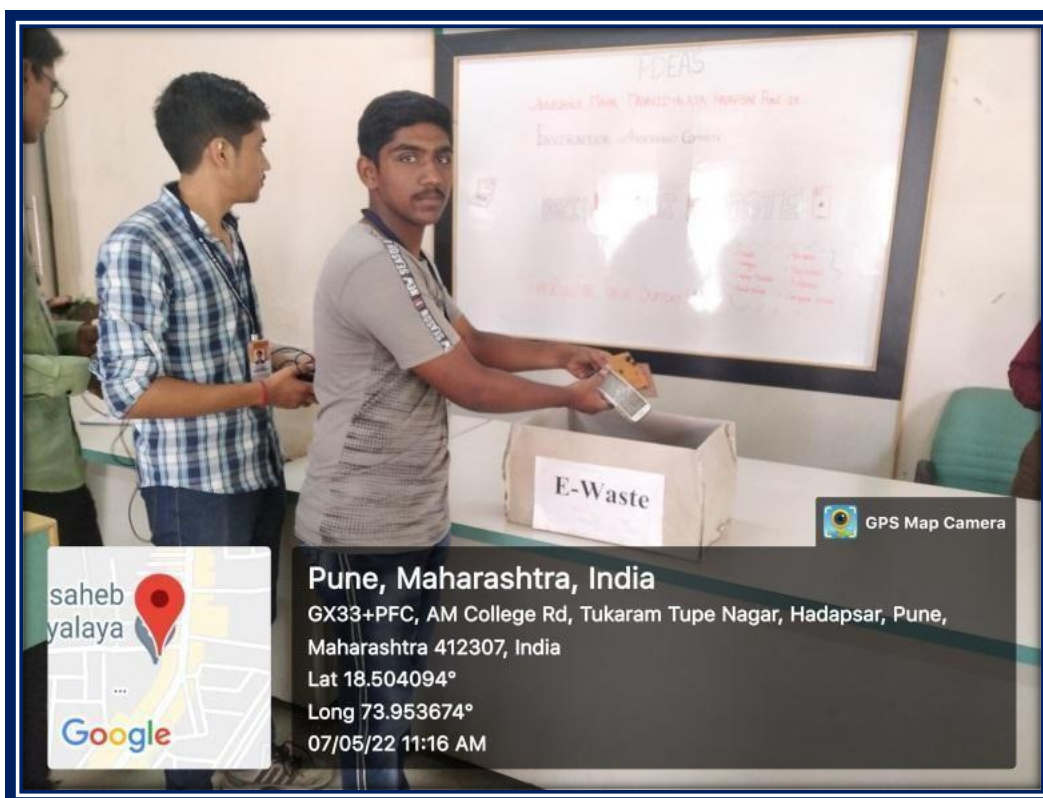


**Pune District Education Association's**  
**Annasaheb Magar Mahavidyalaya**  
**Hadapsar, Pune- 411028**  
Affiliated to Savitribai Phule Pune University, Pune



**Self Study Report: 2024 (4<sup>th</sup> Cycle)**

## E- Waste collected from staff and students





**Pune District Education Association's**  
**Annasaheb Magar Mahavidyalaya**  
**Hadapsar, Pune- 411028**  
Affiliated to Savitribai Phule Pune University, Pune



**Self Study Report: 2024 (4<sup>th</sup> Cycle)**

**e. Biomedical waste management**

<b>Sr. No.</b>	<b>Particulars</b>
i	Installation of sanitary napkin wending machines in college
ii	Installation of sanitary napkin destroyer machines in college
iii	Installation of sanitary napkin wending machine in college ladies hostel
iv	Use of autoclave for decontaminating the microbial waste

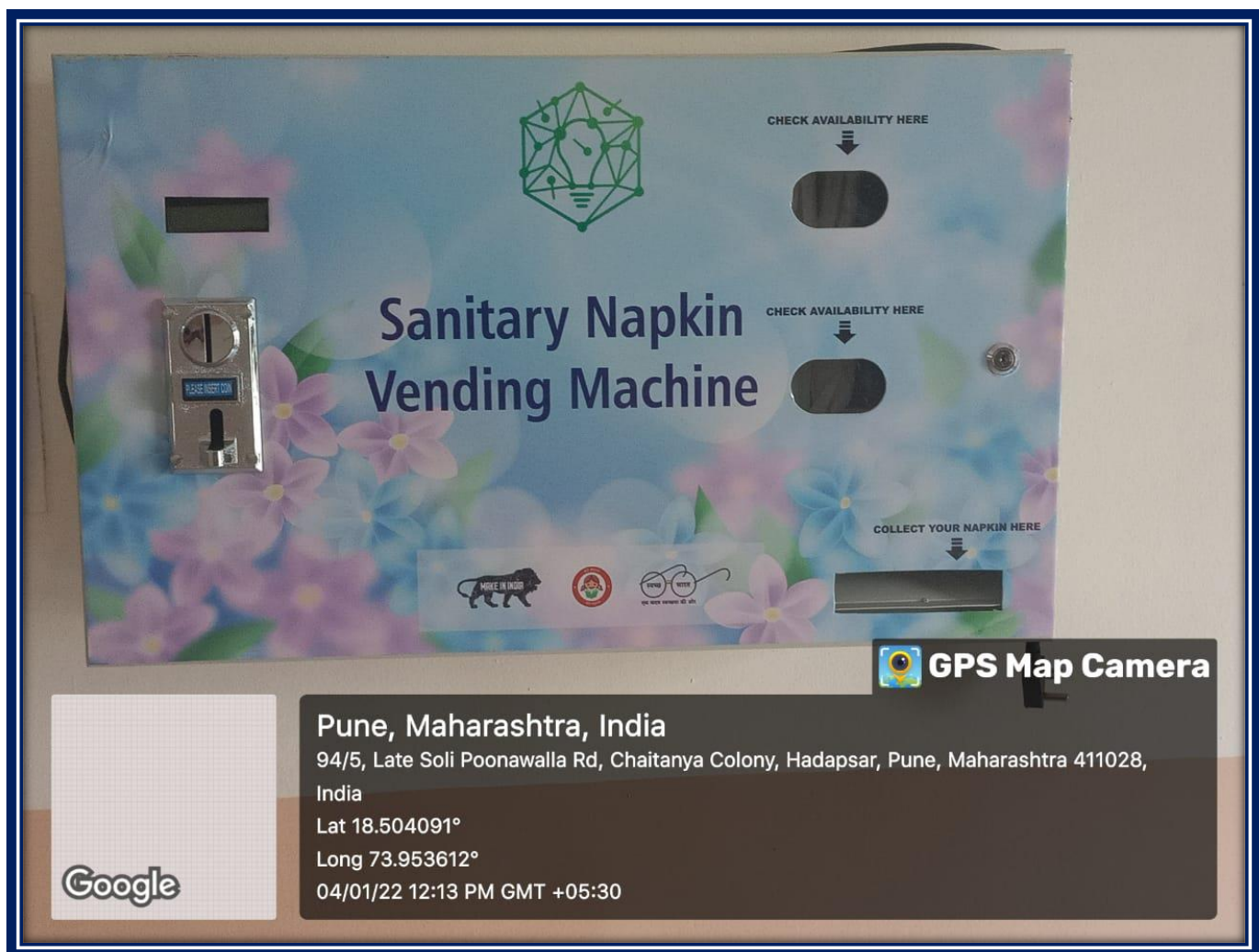


Pune District Education Association's  
**Annasaheb Magar Mahavidyalaya**  
Hadapsar, Pune- 411028  
Affiliated to Savitribai Phule Pune University, Pune



**Self Study Report: 2024 (4<sup>th</sup> Cycle)**

## Sanitary napkin winding machine in college campus





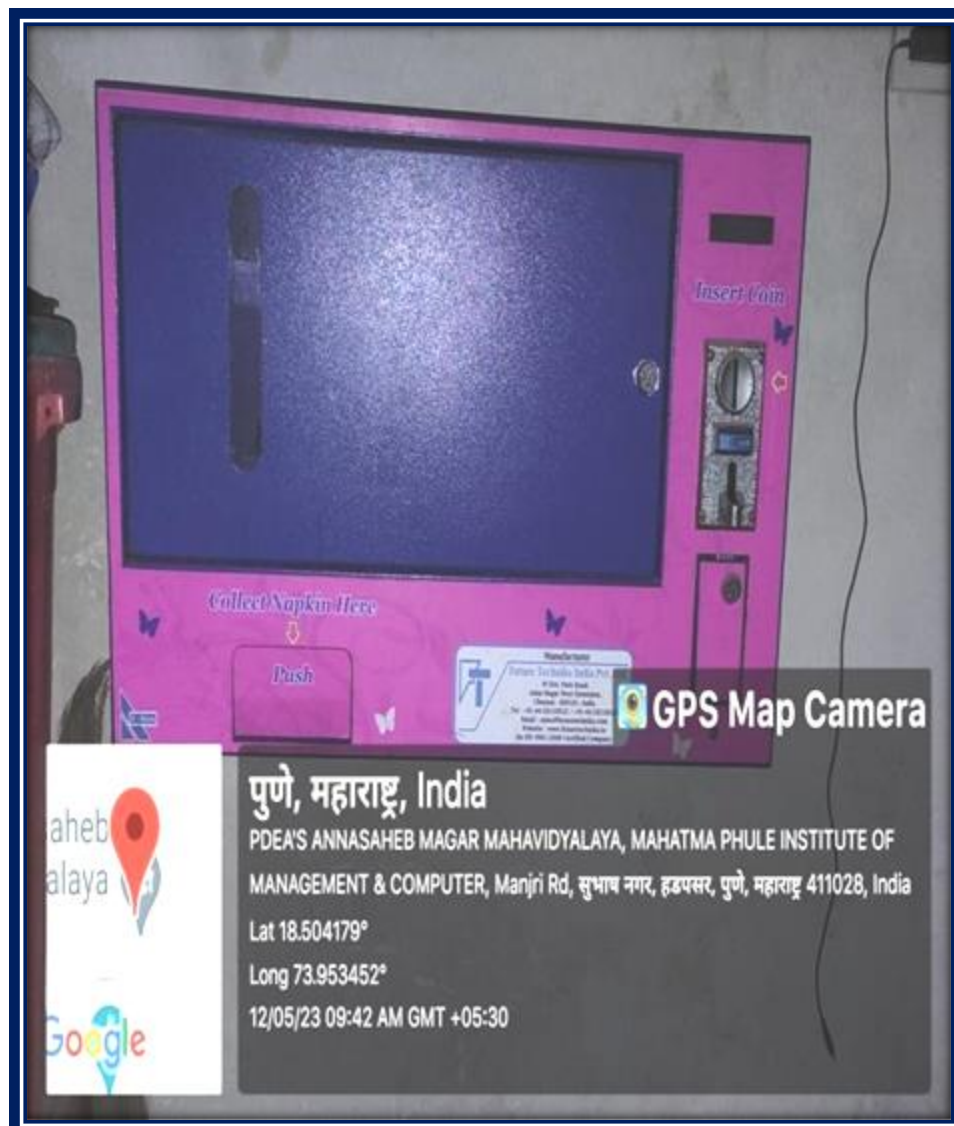


**Pune District Education Association's**  
**Annasaheb Magar Mahavidyalaya**  
**Hadapsar, Pune- 411028**  
Affiliated to Savitribai Phule Pune University, Pune



**Self Study Report: 2024 (4<sup>th</sup> Cycle)**

## Sanitary napkin winding machine in college campus



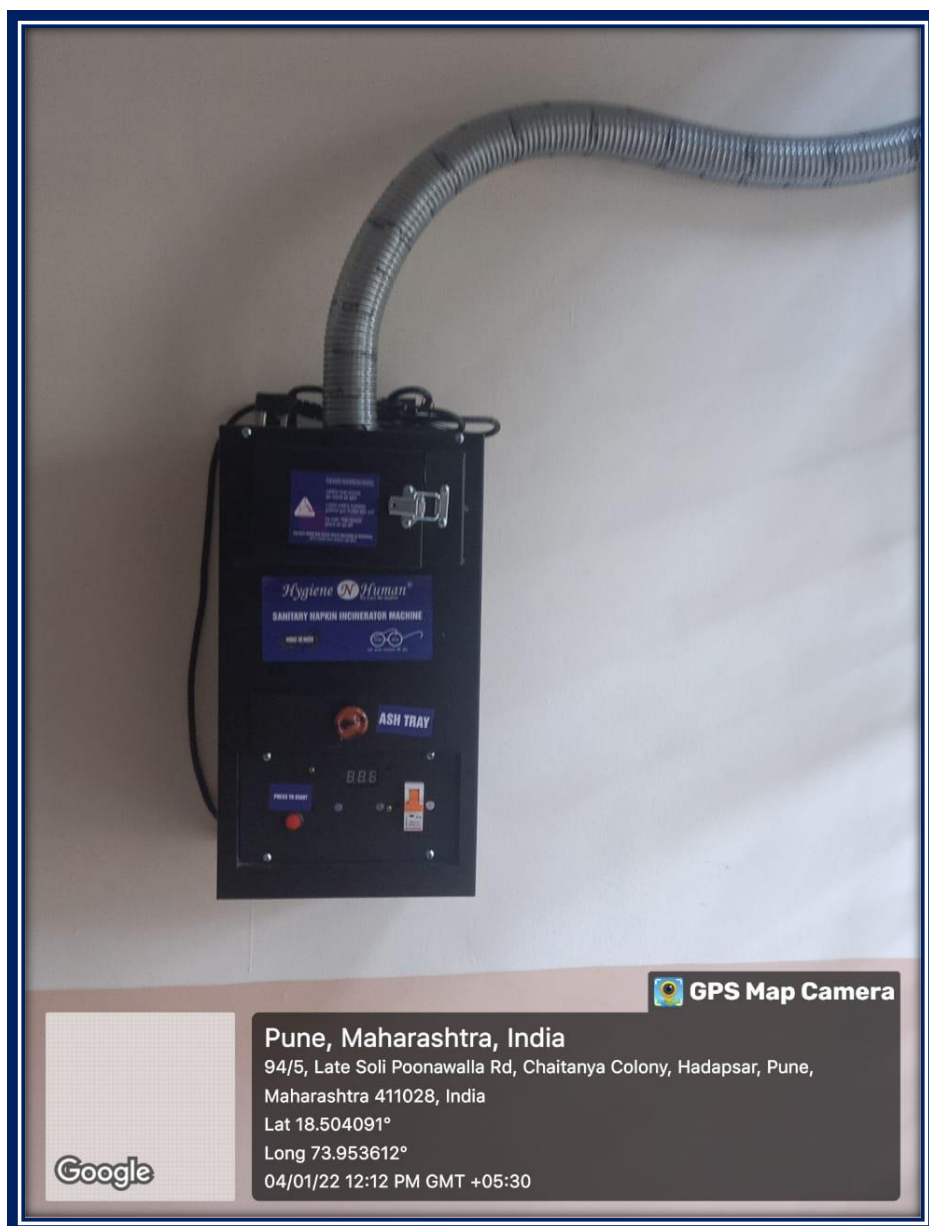


Pune District Education Association's  
**Annasaheb Magar Mahavidyalaya**  
**Hadapsar, Pune- 411028**  
Affiliated to Savitribai Phule Pune University, Pune



## Self Study Report: 2024 (4<sup>th</sup> Cycle)

### Sanitary napkin destroyer machine in college campus





Pune District Education Association's  
**Annasaheb Magar Mahavidyalaya**  
**Hadapsar, Pune- 411028**  
Affiliated to Savitribai Phule Pune University, Pune



**Self Study Report: 2024 (4<sup>th</sup> Cycle)**

## Sanitary napkin destroyer machine in college campus







Pune District Education Association's  
**Annasaheb Magar Mahavidyalaya**  
**Hadapsar, Pune- 411028**  
Affiliated to Savitribai Phule Pune University, Pune



**Self Study Report: 2024 (4<sup>th</sup> Cycle)**

## Sanitary napkin wending machine in college ladies hostel

Step - 1  
Check Stock &  
Drop 5 Rs Coin Only  
Step - 2 Rotate The Knob Twice  
Step - 3  
Collect Napkin

**Snapyvend**  
if you like this tell others  
if not tell us...

**WENEXT**  
Healthcare India Pvt.Ltd

Add:- S... **GPS Map Camera**  
Opp. Shramjivi Nagar Pathsanstha,  
Villavand...

Pune, Maharashtra, India  
94/5, Late Soli Poonawalla Rd, Chaitanya Colony, Hadapsar, Pune,  
Maharashtra 411028, India  
Lat 18.504116°  
Long 73.953612°  
29/04/22 01:33 PM GMT +05:30

Google





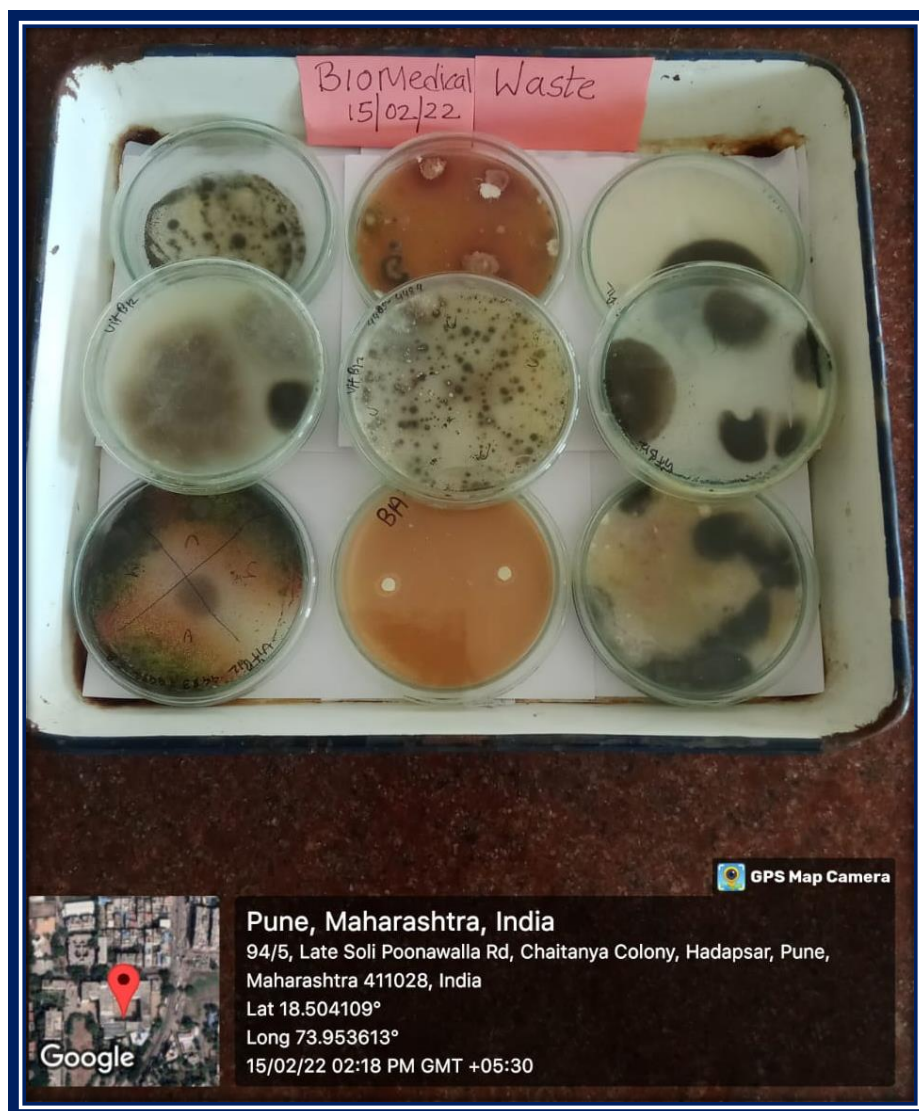
Pune District Education Association's  
**Annasaheb Magar Mahavidyalaya**  
**Hadapsar, Pune- 411028**  
Affiliated to Savitribai Phule Pune University, Pune



**Self Study Report: 2024 (4<sup>th</sup> Cycle)**

## Biomedical waste management by Microbiology Department

### Biomedical waste collection





Pune District Education Association's  
**Annasaheb Magar Mahavidyalaya**  
Hadapsar, Pune- 411028  
Affiliated to Savitribai Phule Pune University, Pune



**Self Study Report: 2024 (4<sup>th</sup> Cycle)**

## Biomedical waste management by Microbiology Department

Decontamination of biomedical waste using autoclave







Pune District Education Association's  
**Annasaheb Magar Mahavidyalaya**  
**Hadapsar, Pune- 411028**  
Affiliated to Savitribai Phule Pune University, Pune



**Self Study Report: 2024 (4<sup>th</sup> Cycle)**

## Biomedical waste management by Microbiology Department

Biomedical waste ready for disposal

